

AN ISO 9001:2015 COMPANY

Date: 01/03/2026

WHY SOHAM.

- ESTABLISHMENT YEAR: **2001**
- WORK TYPE: MACHINE MANUFACTURING FROM LAST 24 YEARS.
- WORK TYPE: FROM 2011 MACHINE MANU. FOR INCENSE, DHOOP INDS &
- WE PROVIDE AUTOMATIONS FOR ANY FIELD.
- FACTORY SPACE: 20,000 SQ. FEET.
- STAFF IN FACTORY: 50 PLUS
- ALL PARTS OF MACHINE'S ARE MADE INSIDE THE FACTORY.
- ENGINEERS IN FACTORY: 15 PLUS WITH OWNER.
- SOLD OUT MACHINES: 30000 PLUS (INDIA & EXPORT)
- SEPARATE SPARE DEPARTMENT WITH ALL PART'S STOCK AVAILABILTY
- QC OF ALL PARTS: BY ENGINEERS
- AUTOMATIC CNC, LAERCUT & VMC MACHINES FOR IN-HOUSE PARTS MAKING.
- SEPARATE SERVICE DEPT.: WITH 4 PERSONS FOR ALL TYPES OF MACHINES.
- ALL RAW MATERIALS AVAILBLE FOR INCENSE & DHOOP INDS.
- PERFUMES, DEP, BOXES, & POUCH ALSO AVAILABLE.
- LIFE TIME, TELEPHONIC SERVICE FREE FOR 9AM TO 6PM.
- SUPPLIED MACHINES TO GODREJ, VENDOR OF ITC & CYCLE
- COMPANY AND MANY MORE.
- WE CAN MAKE ANY TYPE OF MACHINES AS PER CUSTOMR'S REQUIREMENT.
- MACHINE LIFE: MIN. 10 YEARS.
- POWER BILL LESS
- PRODUCTION COST LESS.
- MAINTENCE LESS

ABROAD CLIENT LIST

- ✓ SANGGANATHI SDN.BHD.- MALAYSIA
- ✓ C/O EMELLAN (M)SND BHD- MALAYSIA
- ✓ AROMATIC LTD- RUSSIA
- ✓ WAGAGEN BANK S.C- ETHIOPIA
- ✓ SAMIR MEIZU-TUNISIA
- ✓ HINGURANA GROUP- SRI LANKA
- ✓ SUWANDA INDUSTRIES PVT LTD-SRI LANKA
- ✓ GODREJ NIGERIA LTD- NIGERIA -WEST AFRICA
- ✓ METSEC CABLES LTD- KENYA
- ✓ INDUT INDUSTRIAL PLC - ETHIOPIA
- ✓ MC MITRA SDN BHD -MALAYSIA
- ✓ SHREE CHAMUNDU ENTERPRISES - AFRICA
- ✓ EB CREASY & COMAPANY PLC - SRI LANKA
- ✓ ZIBO UNIQUE MACHINERY TECHNOLOGY CO LTD- CHINA
- ✓ ASIA PLANTATION CAPITAL -MALAYSIA
- ✓ MUTEB FIAISAL ABMED MUTED MASEEF SHOWROOM - SAUDI ARABIA
- ✓ MIG MEDIA NEURONS LTD- SRI LANKA

- ✓ ATHULA PARANAYAPA SERVICES PVT LTD - SRI LANKA
- ✓ KANROSE INTERNATIONAL PVT LTD - SRILANKA
- ✓ SIDDHALEPA AYURVEDA HARBALS PVT LTD - SRI LANKA
- ✓ CARGO MARKETING INTERNATIONAL - BRAZIL
- ✓ VOSTTORG CO LTD – RUSSIA
- ✓ QUALITY INCENSE INCE -- INCENSE COUNTING 11 INCH USA
- ✓ SUNVEAT FOODS LIMITED - Thika Kenya

Our Valuable client list:

- ❖ Godrej Consumer Products Ltd- Himachal Pradesh (8 Machine)
- ❖ Mysore Deep Perfumery House --Indore, Madhya Pradesh, India.
- ❖ Pragathi international - Bangalore
- ❖ Simran Export Incense Pvt Ltd- Delhi
- ❖ Deva Agarbatti Products- Kurnool
- ❖ Geofast Industry Indial Ltd- Hyderabad
- ❖ Shree Cha enterprise- Simoga
- ❖ Hem Corporation Pvt Ltd- Thane (2 machine)
- ❖ Pitambari Products pvt Ltd- Maharashtra
- ❖ Mirakal- Pune
- ❖ Shah Fragrance- Ahmedabad
- ❖ C.R.Agarbatti- Bangalore
- ❖ Utsav Fragrance- Rajkot (2 Machine)
- ❖ Krutika Industries - Jamjodhpur
- ❖ Raghubira Carbons- Jamnagar (3 Machine)
- ❖ Pricious International- Ankleshvar (2 Machine)
- ❖ Kamkhya Aromatics (ITC)- Kanpur (2 Machine)
- ❖ Shree Krishna Gopal Udyog- Punjab
- ❖ Su Moon - Kerala
- ❖ Rajshree Fince Pvt Ltd- Indore
- ❖ Ahuja Agarbatti- Raipur (2 Machine)
- ❖ Sun Tempal - Godia
- ❖ The Bright Impex- Karnataka
- ❖ Kuber Group of India- Delhi
- ❖ Bharat food And Beverages Pvt Ltd- Noida
- ❖ Shree Ram Products- Ratlam
- ❖ Arun Gupta- Delhi
- ❖ Trivani Sales- Kannouj
- ❖ Amalya Herbals- Bhopal
- ❖ Balaji Agrabatti Works- Balotra
- ❖ Shree Shyam Industries- Rourkela
- ❖ Harsh Incense- Sagara
- ❖ Nishan Products- Ahmedabad
- ❖ Settelite Corporation- Gondia
- ❖ Shyam Traders- AP
- ❖ Shree balaji Enterprises- Raipur (3 Machine)
- ❖ M W & Sons- Sholapur, MH
- ❖ Satellite Corporation - Gondiya
- ❖ Balaji agarbatti works- Balotra
- ❖ Vikash Potteries- Jharkhand (2 machine)
- ❖ Kam products - Kerala
- ❖ Sunshine Agency-Chennai (2 Machine)

- ❖ ABL ENTERPRISE- BURDHAMAN, WB
- ❖ Sai Samartha Cosmetics Pvt ltd- Palghar, MH
- ❖ IXORA EXPORTS PVT LTD- Kamrej, Surat
- ❖ FOUR ACES FRAGRANCES LLP-Indore, Madhya Pradesh, India.
- ❖ SHREE SAKARI INDUSTRIES – Patna (2 machine)
- ❖ JESIKA ENTERPRISE – Assam
- ❖ PRAGATISHEEL ENGINEERING- Dewas, MP
- ❖ SHRI SAI SALES- Durg, chhatishgrah
- ❖ KANPUR FLOWERCYCLING PVT LTD- Kanpur
- ❖ SUBHAKART INDIA PVT LTD- Mumbai
- ❖ MAA VISHNUPRIYA FACTORY- Boisar, MH
- ❖ MOHIT SHEKHDA -Surat, Gujarat, India.
- ❖ MPR POJA PRODUCTS -- CHENNAI
- ❖ ADITYA PERFUMERY --AKOLA MH
- ❖ Marvellite Aromatics Pvt Ltd -Anjar, Gujarat, India. Dipping machine
- ❖ Forest Bird Productions Shaurya Samanta ---Murshidabad, West Bengal, India
- ❖ Globe perfumery Pvt Ltd -Begusarai, Bihar, India.
- ❖ Pavithram industries :--- Vellore, Tamil Nadu, India.---
- ❖ Bhaiv laxmi production, :- Barasat, West Bengal, India.
- ❖ Shree shyam industries - Rourkela, Orissa, India.
- ❖ NATURIS COSMETICS PVT. LTD- Jammu, Jammu and Kashmir, India. Box packing
- ❖ Parekh Sons - Gondia, Maharashtra, India. Dipping machine
- ❖ Globe perfumery Pvt Ltd - Begusarai, Bihar, India.
- ❖ Ocean Traders - Amit Kumar Jamuar - Begusarai, Bihar, India.
- ❖ LOGASSA DIVINE PVT.LTD - Bhiwandi, Maharashtra, India.
- ❖ INCENSE COLLECTIVE PRIVATE LIMITED - Palghar, Maharashtra, India.




Indias No 1
Award winner
 From Zee Media & Incense Media
 For innovation in agarbatti industries.





HIGH SPEED AUTOMATIC TRAY FORMING MACHINE

SPECIFICATIO

- **Production** 480 to 650 boxes per hour.
- **Machine size:** 60 x 90 x 60 inches
- **Required power for machine** 2 HP single phase.
- **Required air compressor** 3hp 3 phase **your scope**.
- **Machine weight @** 350 kg.
- **Open box size.:** 10~24 x 15~18.5 inches.
- **finish box size:** l- 260~350, w-195~280, h- 35~60 mm
- **Required GSM** 250 to 400.
- **Electric control panel with servo motor PLC and HMI.**
- **9 months' warranty on main motor, PLC, and HMI.**
- **Telephonic service free for 2 years (Monday to Saturday 9 AM to 6 PM, Sunday Weekly off) service will be discontinue if you use other company's spare in this machine.**
- **Payable service available anytime.**



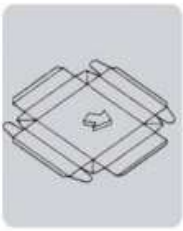
SCAN ME

SCOPE OF MATERIALS

- MAIN SERVO MOTOR 1KW WITH GEARBOX – DELTA- 1
- PLC WITH EXTENSION - DELTA- 1
- HMI - DELTA- 1
- ALL CYLINDERS -SPAC/JANATICS
- LM RAILS, BALL SCREW AND BLOCKS - CHINA
- MAIN BODY - MS FABRICATED.
- ALL COVERS - MS SHEET METAL WITH
- ALL SENSORS - DOLPHIN/OMRONS

POWDER COATING.

Reference video to understand machine working: ---<https://youtu.be/NovNIWbxE8>



Feeding paper



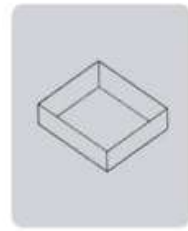
Long-side edgefolding



Corner folding



Brod-side edgefolding



Finshed box

Terms and Conditions:

Price per machine INR 16 lakh/-(ex-factory) any 1 size only. (1.5 lakhs extra for 2nd size)

Extra: Tax, packing, forwarding, transportation & installation.

Delivery within 40 days of confirmation with 50% of advance and balance at a time of delivery from our factory.

GSTID: 24AADCG3670J1ZM

ThankYou

For Soham Industrial Machinery Ltd.

KISHOR KAPADIYA 98255 27848

DIRECTOR